



Knowledge Inside
arKItect your system

arKItect SEA 6.1 Release Notes

Overview

| | |
|---------------------------------|---|
| Interface with DOORS..... | 2 |
| Requirement as Tree (RAT) | 3 |
| Baseline | 3 |
| Allocation chain | 4 |
| Init chain from object | 5 |
| Other | 7 |



SEA 6.1 Release Notes

Interface with DOORS

In SEA 6.1, structure of arKitect data to be exported in DOORS has been changed:

1) DAS module contains 3 mains chapters :

- STR_COMPs with all requirements allocated to a Component.

Components names are used as a chapter to group all allocated requirements.

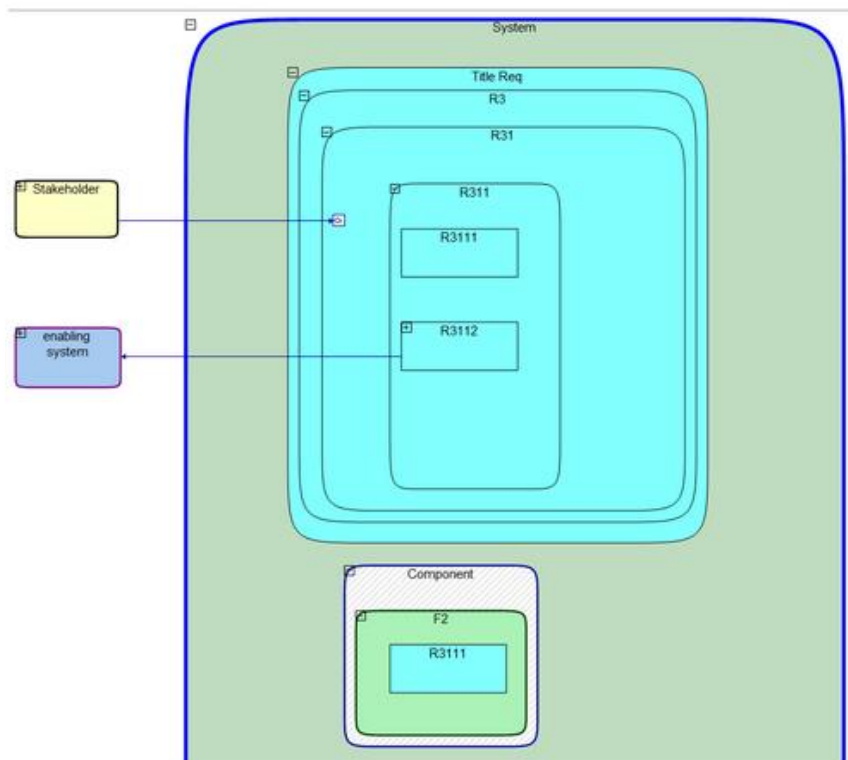
- STR_SYS with all requirements consuming a flow from another system

Systems names are used as a chapter to group all allocated requirements.

- Design requirements with all "intermediate" requirements

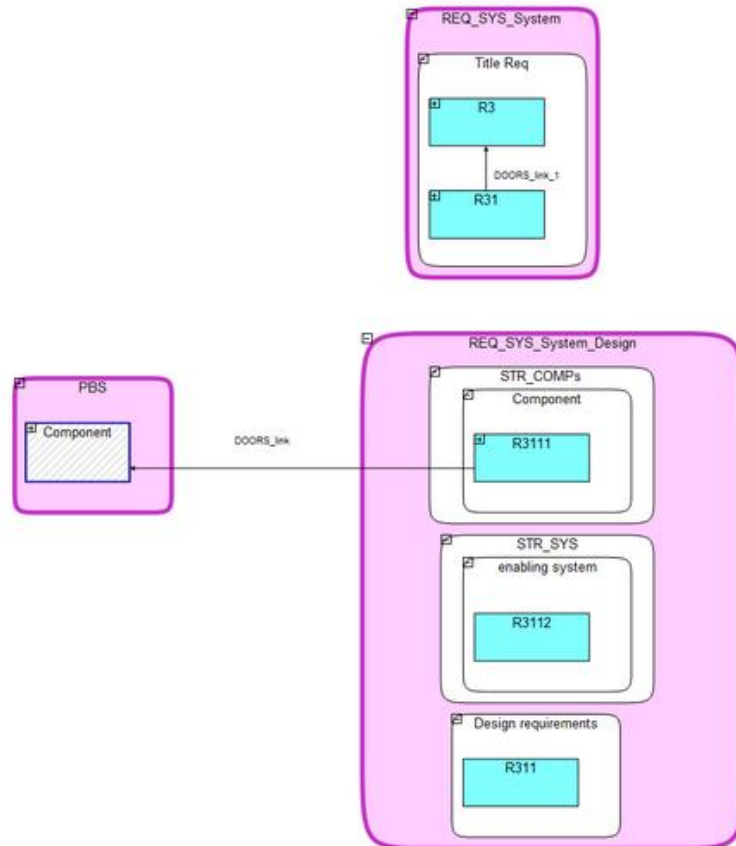
2) STR Module is structured according to Title requirements.

arKitect Data





Structure to be exported to DOORS



Requirement as Tree (RAT)

- RAT can now be stopped at a defined requirement type
- RAT can now export all tests allocated to a requirement
- RAT improvement to export more options.

Baseline

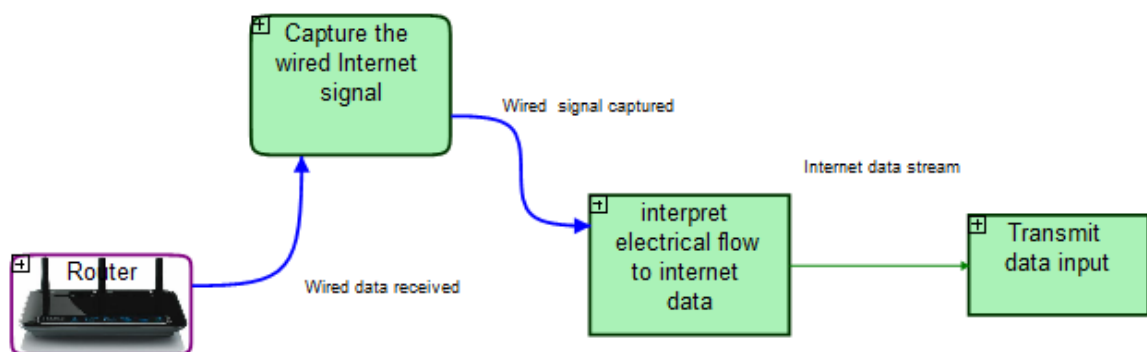
- Fix of automatic deliverable naming by the Baseline tool
- The manage Baseline GUI is no longer displayed when using fast-release/preview mode



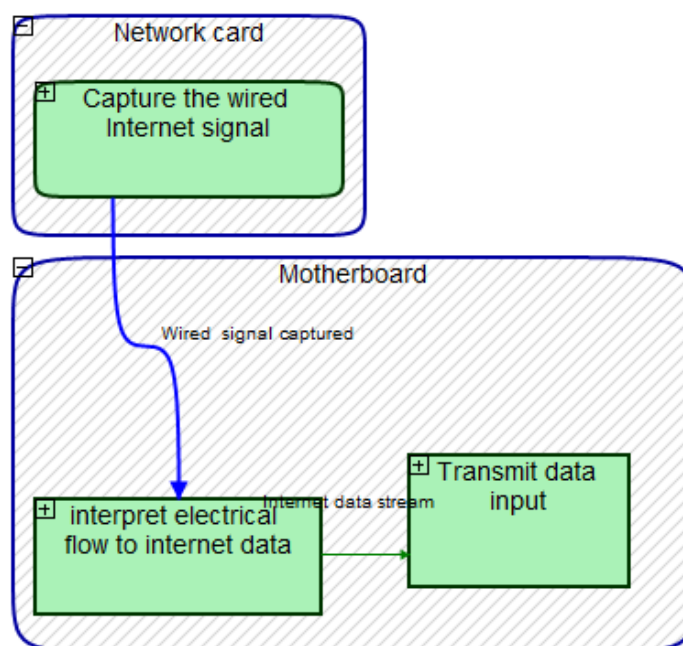
Allocation chain

- Improvement of "Initialize Allocation Chains from FC" script : selecting a Functional Chain corresponding to an existing Allocation Chain will update this Allocation Chain.

Functional Chain (previous one didn't have object Router) :

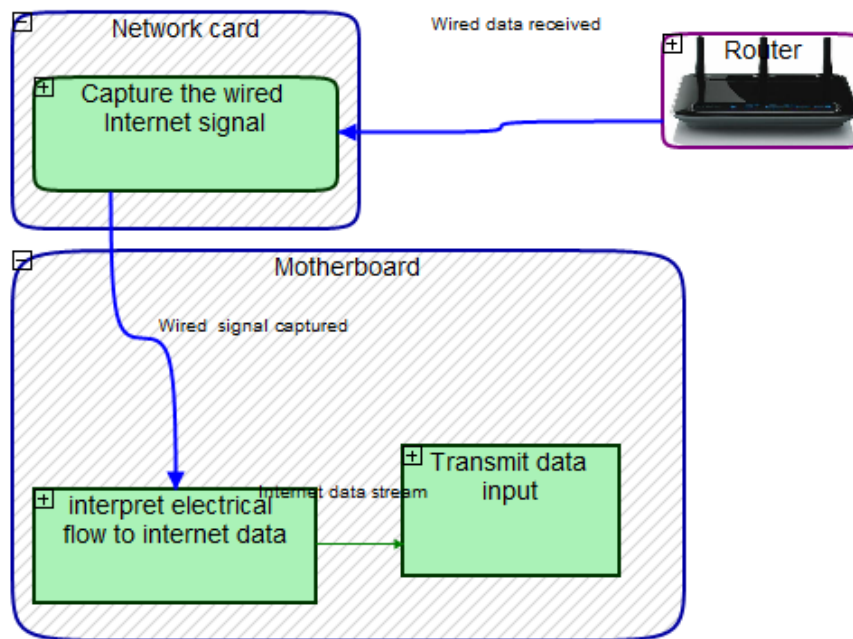


Current Allocation Chain (corresponding to Functional Chain without Router object)





Result after run script "Initialize Allocation Chains from FC" : The Allocation Chain is updated.



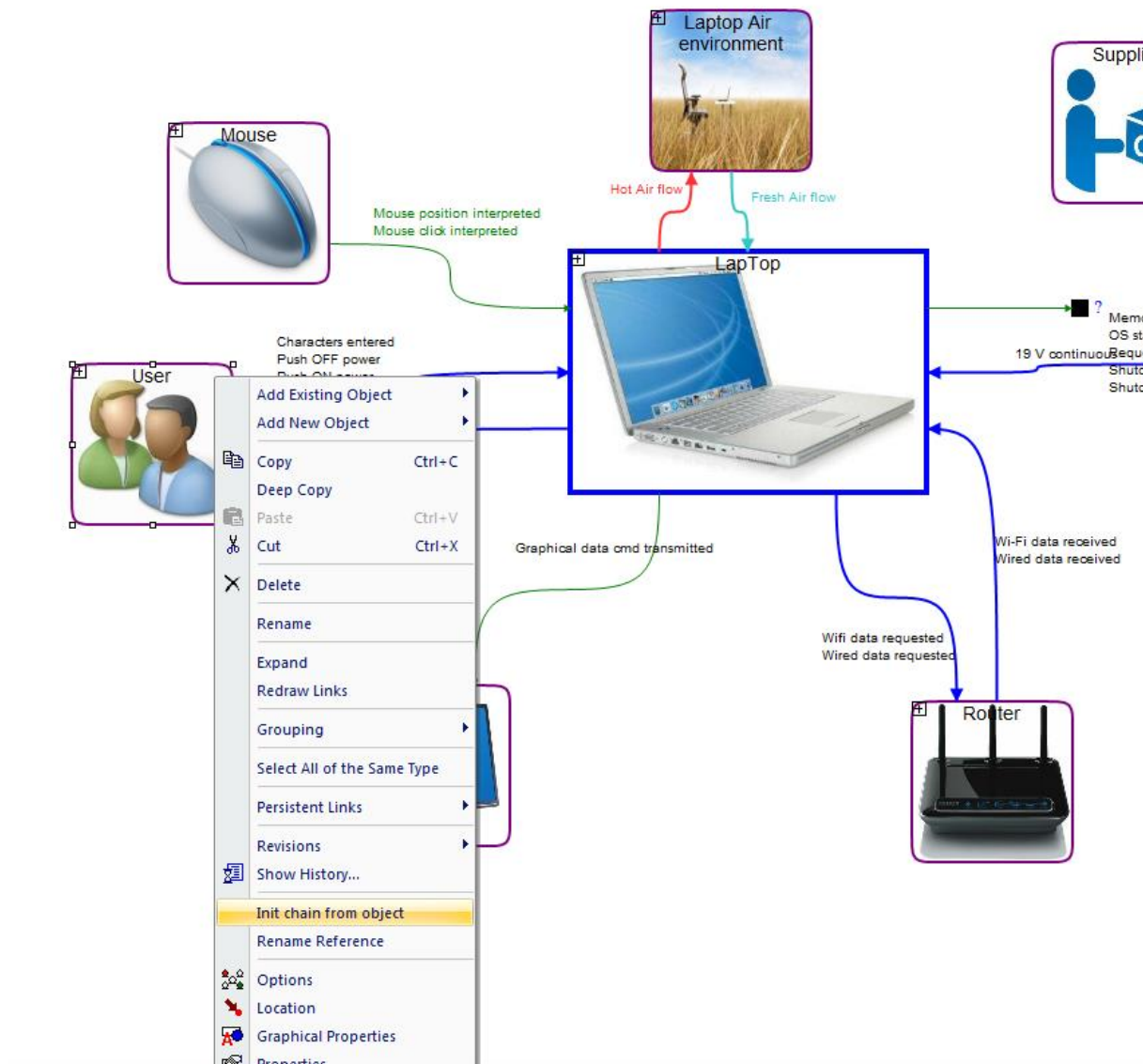
Init chain from object

In SEA 6.1, it is possible to create a new functional chain from an enable system or a function present in view "3.1. Define functional architecture"

Make a right click on a function or an enabling system will display a menu with "Init chain from object".



Laptop (SEA 6.1) 18-10-29 V1: Laptop (SEA 6.1) 18-10-29 V1



Then a window opens (see figure 4) and you can choose the different characteristics of your Functional Chain according to the selected object:

- Name (*the name of the new FC*)
- Propagation direction (*in which direction you want your FC goes*)
 - Forward
 - Backward
 - Both



- Link types (*choose the type of links you want to see in your FC*)

All links

- Physical flow
 - Data flow
- Search Depth (*means how many objects you will take according to the directions*)
 - All
 - 1
 - 2
 - 3
 - ...
 - Include external objects

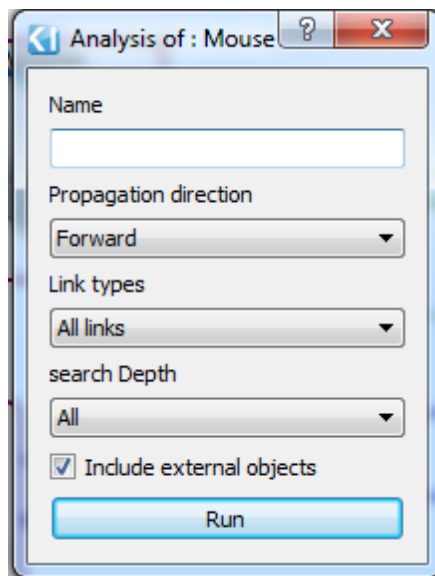


Figure 4. FC configuration

Other

- Fix of the "Define CSR" script